



GTSM-16V100FUS

Shanghai Green Tech Co.,Ltd.

(GT Confidential)

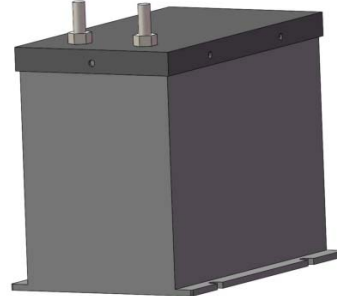


Feature:

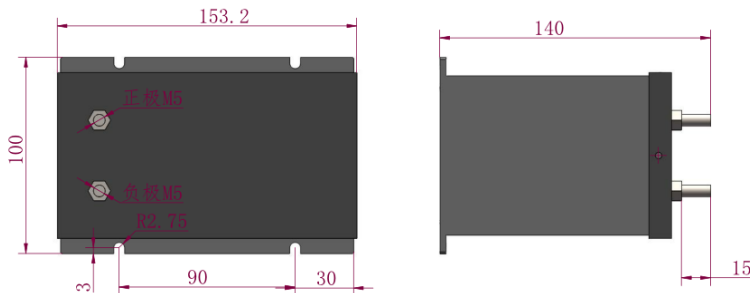
- Low ESR,high power
- More than 1,000,000 times cycle life
- With unit balancing PCB
- Hard-packed, Screw terminal M5

Application:

- Telecommunication
- UPS
- Electrical power system
- Automotive start assist
- Transportation



Size:



Size (mm)			
L	W	H	W1
153.2	100	140	90

Specification

GT PN.	Cap.	Vol.	Max. ESR(mΩ)		Max. Continuous Current (A,ΔT=40°C)	Max.Peak Current 1second (A)	Leakage current(mA) @25°C after 72hrs self discharge	Energy storage (Wh)	Energy Density (Wh/kg)	Weight (kg)
			AC 1KHz	DC						
GTSM-16V100FUS	100F	16V	20	25	25	270	1	3.56	1.42	2.0

Rated Voltage	16VDC
Max. operating voltage	17VDC
Capacitance Tolerance	-10%~+20% (25°C)
Operating Temperature	-40°C~+65°C ΔC< initial capacitance 20%,ΔESR< initial ESR 50%(25°C)
Storage Temperature	-40°C~+70°C
Use life(1500hrs @65°C@16VDC)	ΔC< initial capacitance 30%,ΔESR< initial ESR 100%(25°C)
Storage life (2years @70°C non-load)	ΔC< initial capacitance 30%,ΔESR< initial ESR 100%(25°C)